

Cello C

Our Savior

Vocalise ♩ = 90

First staff of music in bass clef, 4/4 time signature. It begins with a treble clef-like symbol on the first line. The notes are: G2 (quarter), A2 (quarter), B2 (quarter), C3 (quarter), D3 (quarter), E3 (quarter), F3 (quarter), G3 (quarter).

7

Second staff of music in bass clef, 4/4 time signature. The notes are: G2 (quarter), F2 (quarter), E2 (quarter), D2 (quarter), C2 (quarter), B1 (quarter), A1 (quarter), G1 (quarter).

12

Third staff of music in bass clef, 4/4 time signature. It features eighth and sixteenth notes with slurs. The notes are: G2 (quarter), A2 (quarter), B2 (quarter), C3 (quarter), D3 (quarter), E3 (quarter), F3 (quarter), G3 (quarter), A3 (quarter), B3 (quarter), C4 (quarter), B3 (quarter), A3 (quarter), G3 (quarter), F3 (quarter), E3 (quarter), D3 (quarter), C3 (quarter), B2 (quarter), A2 (quarter), G2 (quarter).

16 *He is Risen* ♩ = 102

Fourth staff of music in bass clef, 4/4 time signature. The notes are: G2 (quarter), A2 (quarter), B2 (quarter), C3 (quarter), D3 (quarter), E3 (quarter), F3 (quarter), G3 (quarter), A3 (quarter), B3 (quarter), C4 (quarter), B3 (quarter), A3 (quarter), G3 (quarter), F3 (quarter), E3 (quarter), D3 (quarter), C3 (quarter), B2 (quarter), A2 (quarter), G2 (quarter).

20

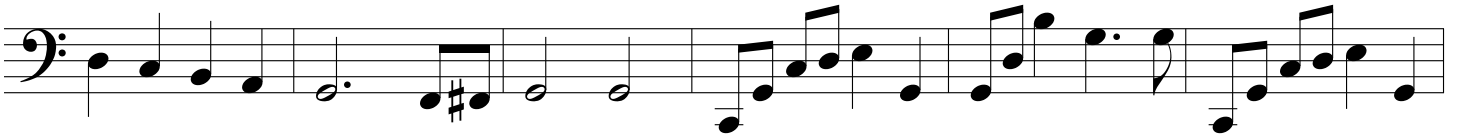
Fifth staff of music in bass clef, 4/4 time signature. The notes are: G2 (quarter), A2 (quarter), B2 (quarter), C3 (quarter), D3 (quarter), E3 (quarter), F3 (quarter), G3 (quarter), A3 (quarter), B3 (quarter), C4 (quarter), B3 (quarter), A3 (quarter), G3 (quarter), F3 (quarter), E3 (quarter), D3 (quarter), C3 (quarter), B2 (quarter), A2 (quarter), G2 (quarter). The staff ends with a double bar line and a 2/4 time signature.

I Know That My Redeemer Lives ♩ = 84

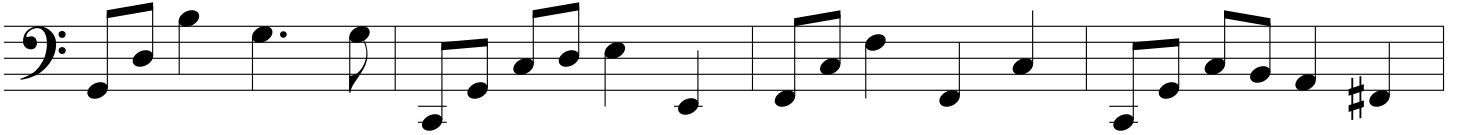
24

Sixth staff of music in bass clef, 2/4 time signature. It starts with a 4/4 time signature. The notes are: G2 (quarter), A2 (quarter), B2 (quarter), C3 (quarter), D3 (quarter), E3 (quarter), F3 (quarter), G3 (quarter), A3 (quarter), B3 (quarter), C4 (quarter), B3 (quarter), A3 (quarter), G3 (quarter), F3 (quarter), E3 (quarter), D3 (quarter), C3 (quarter), B2 (quarter), A2 (quarter), G2 (quarter). The staff ends with a double bar line.

29

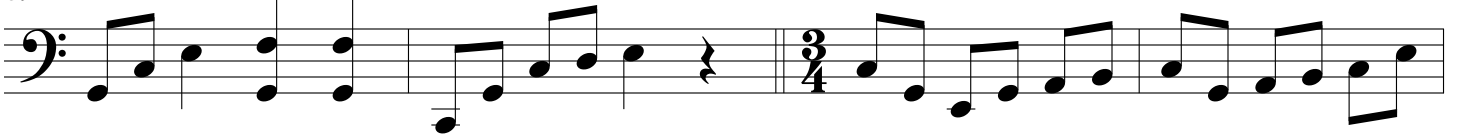


35



39

Come Follow Me ♩ = 76



43



48



55

